

# KALPATARU : THE WISHING TREE

DESIGNED BY - SAHIL BAGGA & SARTHAK SENGUPTA

Displayed at VICTORIA & ALBERT MUSEUM, LONDON

11th November 2015 till 06th January 2016



SAHIL & SARTHAK



SARTHAK SAHIL DESIGN CO

E. [design@sahilsarthak.com](mailto:design@sahilsarthak.com)

W. [www.sahilsarthak.com](http://www.sahilsarthak.com)



## ABOUT THE DESIGNERS



Sahil Bagga & Sarthak Sengupta, both alumni of the prestigious Design School, Politecnico di Milano-Italy, started their own design studio in Delhi in 2009. They synchronize their individual skills to create objects that are reflective yet contemporary. Their trademark, the “Zero Kilometer™ “ approach makes innovative use of Indian craftsmanship and materials to translate them into products, which are 'As Sustainable As Possible' or ASAP as referred to by them. Keeping the concept of green luxury in mind, they have introduced this model to design commercial spaces, interiors of heritage hotels, landmark restaurants, and luxury homes. Their products have been widely published and showcased at various international platforms like the Triennale Design Museum, and the Salone del Mobile in Milan, and the Asia Triennale in Manchester. Their work has earned them numerous awards such as the EDIDA, the IDF design awards 2013 and most recently the Asia Talents award in 2014. Recognizing their innovative business model, they were awarded the Young Creative Entrepreneur Award by the British Council of India.



SARTHAK SAHIL DESIGN CO

E. [design@sahilsarthak.com](mailto:design@sahilsarthak.com)

W. [www.sahilsarthak.com](http://www.sahilsarthak.com)

KALPATARU : THE WISHING TREE

# CONCEPT NOTE

## KALPATARU : THE WISHING TREE

“Kalpataru” is a wish-fulfilling divine tree in Hindu mythology. It was mentioned in Sanskrit literature from the earliest sources onwards and has become a part of many legends in the years to come.

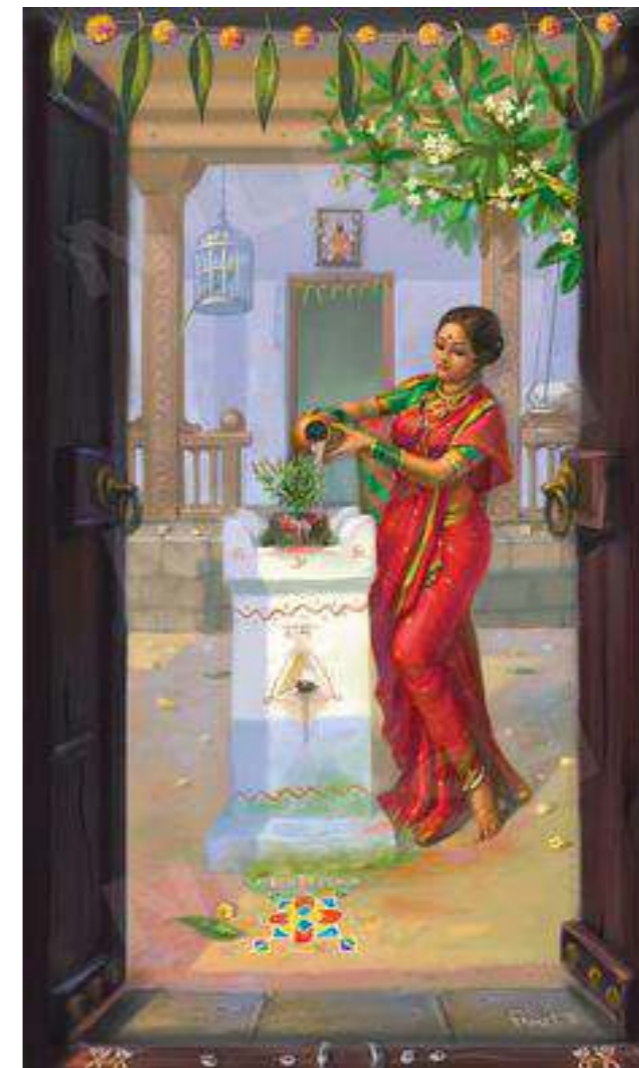
While designing this installation, it has been our effort to create an experience that celebrates “Nature” & “Culture”, juxtaposed with the context of Deepavali, the festival of lights. Therefore, the light installation that we are proposing, not only celebrates illumination in it’s literal sense, but also as a metaphor of hope, prosperity and ecology.

This light installation is a poetic interpretation of certain every customs practised in India, which becomes the genesis of our design concept. For example, the custom of decorating & worshipping the “Tulsi” (Holy Basil) during Deepavali is a common practice in Indian homes and how we see it as a modern day interpretation of the “Kalpataru”, the wishing tree”

### Genesis of the Piece

**Victoria and Albert Museum, London**, is one of the most famous and most visited museums of the world. It is a part of the British Museum and has a long and rich history of housing Asian antiquities. This year, the V&A was celebrating India week and they wanted to commission an art installation that celebrates Christmas and Diwali and both the cultures together.

Our proposed artwork, The Kalpataru, was chosen by the V&A with great enthusiasm as it resonated all the same values and symbolisms and this lead to the making of this beautifully handcrafted installation.



Women approaching Holy Basil ( Tulsi)  
British Museum - 1700



Family starting off Deepavali Celebrations  
by worshipping the Tulsi Plant



# MATERIAL FACTS

## EMBELISHMENT

The Kalpataru installation is embellished with 20 exquisite Kerala Mural paintings, handpainted by master artists of Kerala. The colour palette is very festive and organic and the style almost reminds us of Chinese water colour paintings, reminiscence of the silk route trade links between Kerala and China. The flora that is depicted in the paintings are : Lotus, Mango tree, Banana tree, Jack fruit tree, Frangipani tree and Tuli or the Holy Basil. All these plants & trees have a symbolic meaning to various rituals and ceremonies practised in India.



Traditional Kerala Mural Painting



Traditional silver smithing techniques from the old city of Delhi and Moradabad



## STRUCTURE

The overall framework is handcrafted in brass and copper sheets, enhanced with a hand beaten texture popularly seen in traditional utensils from Indian kitchens. A team of expert silversmiths will use their skill and experience to transform sheet metal into beautiful motifs and structures.

The Kalpataru foliage is created by an ensemble of classic Indian motifs such as the Lotus Petal and the Ambi or paisley



SARTHAK SAHIL DESIGN CO

E. [design@sahilsarthak.com](mailto:design@sahilsarthak.com)

W. [www.sahilsarthak.com](http://www.sahilsarthak.com)

# KALPATARU : THE WISHING TREE

# BEHIND THE SCENES



Kerala Mural Paintings - Work in Progress



Metal Workshop- Work in Progress



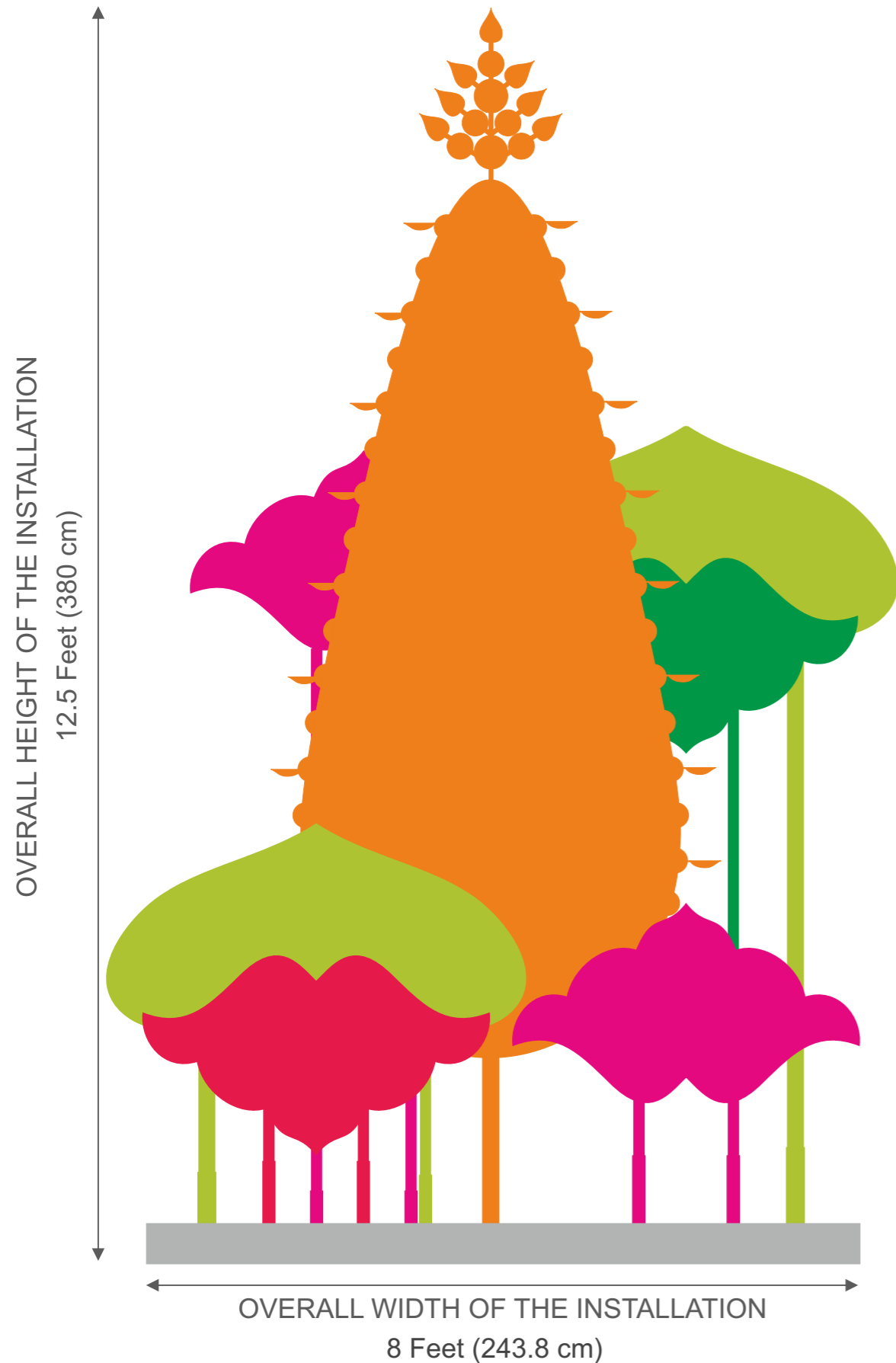
SARTHAK SAHIL DESIGN CO

E. [design@sahilsarthak.com](mailto:design@sahilsarthak.com)

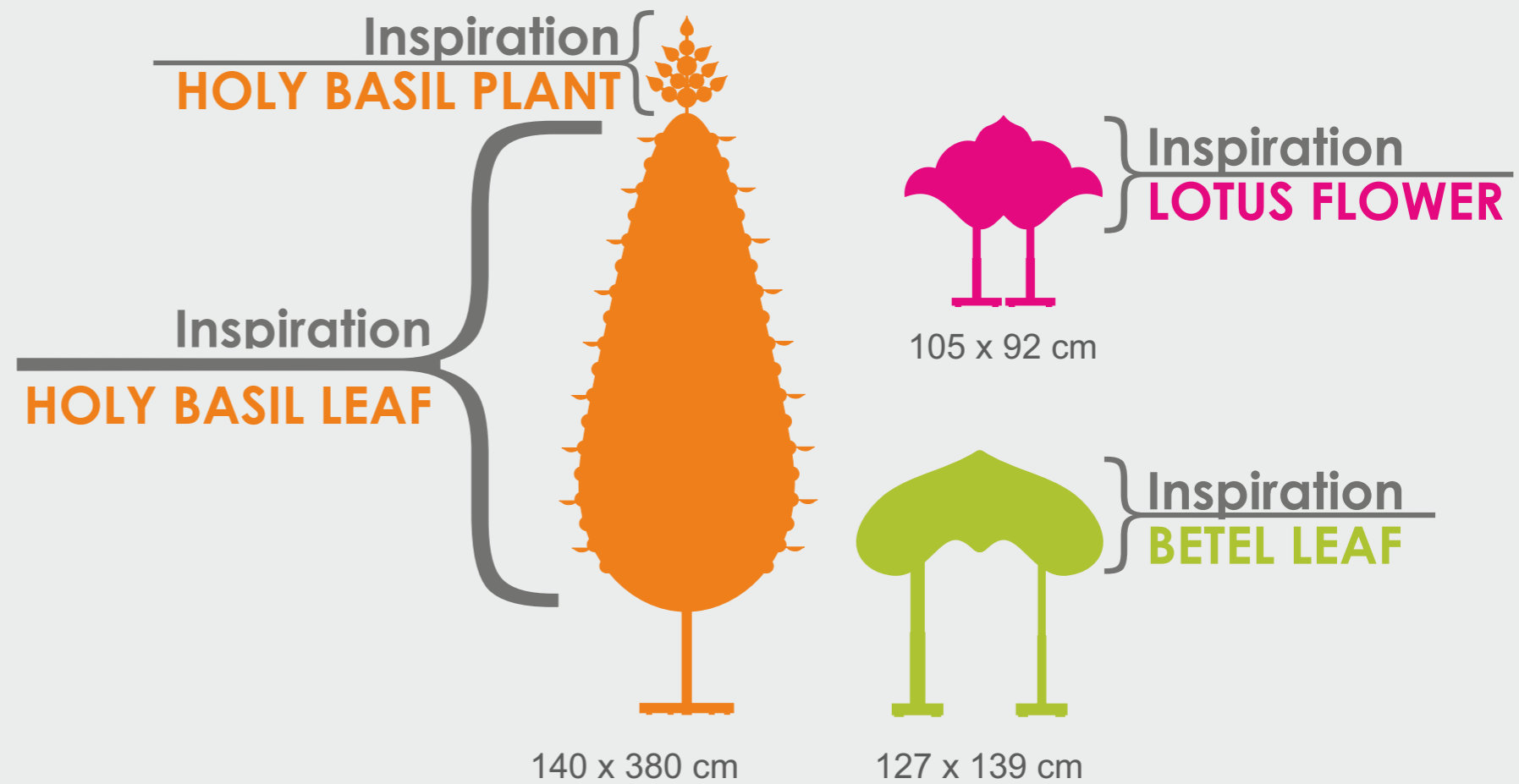
W. [www.sahilsarthak.com](http://www.sahilsarthak.com)

KALPATARU : THE WISHING TREE

# DIMENSION



## FORMS OF THE KALPATARU TREE



# ACTUAL PHOTOGRAPH

KALPATARU INSTALLATION DISPLAYED AT THE VICTORIA & ALBERT MUSEUM LONDON



Protected by copyright and trademark under Intellectual property rights, India. All rights reserved. © Sahil & Sarthak



SARTHAK SAHIL DESIGN CO

E. [design@sahilsarthak.com](mailto:design@sahilsarthak.com)

W. [www.sahilsarthak.com](http://www.sahilsarthak.com)

## KALPATARU : THE WISHING TREE

# ACTUAL PHOTOGRAPH

KALPATARU INSTALLATION DISPLAYED AT THE VICTORIA & ALBERT MUSEUM LONDON



Protected by copyright and trademark under Intellectual property rights, India. All rights reserved. © Sahil & Sarthak



SARTHAK SAHIL DESIGN CO

E. [design@sahilsarthak.com](mailto:design@sahilsarthak.com)

W. [www.sahilsarthak.com](http://www.sahilsarthak.com)

KALPATARU : THE WISHING TREE



# ACTUAL PHOTOGRAPH

KALPATARU INSTALLATION DISPLAYED AT THE VICTORIA & ALBERT MUSEUM LONDON



Protected by copyright and trademark under Intellectual property rights, India. All rights reserved. © Sahil & Sarthak



SARTHAK SAHIL DESIGN CO

E. [design@sahilsarthak.com](mailto:design@sahilsarthak.com)

W. [www.sahilsarthak.com](http://www.sahilsarthak.com)

KALPATARU : THE WISHING TREE



The top crown symbolises Tulsi plant ( Holy Basil), hand crafted in brass with a beautiful beaten texture

Hand crafted metal frames, fabricated by traditional silversmiths

Hand painted murals of foliage beautifully framed in brass metal frames

Each motif will be lit by uplighters, one in the front and one at the back. These light fixtures will be fitted onto the platform

The entire installation is mounted on a platform. The platform clades all the electrical wires and connections

# ACTUAL PHOTOGRAPH

KALPATARU INSTALLATION DISPLAYED AT THE VICTORIA & ALBERT MUSEUM LONDON

## Glimpses of the paintings in detail



Protected by copyright and trademark under Intellectual property rights, India. All rights reserved. © Sahil & Sarthak



SARTHAK SAHIL DESIGN CO

E. [design@sahilsarthak.com](mailto:design@sahilsarthak.com)

W. [www.sahilsarthak.com](http://www.sahilsarthak.com)

## KALPATARU : THE WISHING TREE

# ACTUAL PHOTOGRAPH

KALPATARU INSTALLATION DISPLAYED AT THE VICTORIA & ALBERT MUSEUM LONDON

Reference Image: Oil Lamp wall installation  
at Narsimha Temple in Kerala



The central mural motif is the tallest out of the six  
and is fitted with brass lamps, that can be removed or fitted

Protected by copyright and trademark under Intellectual property rights, India. All rights reserved. © Sahil & Sarthak



SARTHAK SAHIL DESIGN CO

E. [design@sahilsarthak.com](mailto:design@sahilsarthak.com)

W. [www.sahilsarthak.com](http://www.sahilsarthak.com)

KALPATARU : THE WISHING TREE

# ACTUAL PHOTOGRAPH

KALPATARU INSTALLATION DISPLAYED AT THE VICTORIA & ALBERT MUSEUM LONDON



Complete Installation - Rs 25,00,000/ (taxes extra)

Protected by copyright and trademark under Intellectual property rights, India. All rights reserved. © Sahil & Sarthak



SARTHAK SAHIL DESIGN CO

E. [design@sahilsarthak.com](mailto:design@sahilsarthak.com)

W. [www.sahilsarthak.com](http://www.sahilsarthak.com)

## KALPATARU : THE WISHING TREE

# Lotus Flower Frame Painting – Banana Foliage – 2 of 2

MRP – Rs 1,85,000/- (taxes extra)  
Painting - 41.5" x 24", Total Height – 36"



FRONT



BACK



# Lotus Flower Frame Painting – Banana Foliage – 2 of 2

MRP – Rs 1,85,000/- (taxes extra)  
Painting - 41.5" x 24", Total Height – 36"



FRONT



BACK



# Lotus Flower Frame

## Painting – Lotus – Small Height

MRP – Rs 1,85,000/- (taxes extra)

Painting - 41.5" x 24", Total Height – 41"



FRONT



BACK



SARTHAK SAHIL DESIGN CO

E. [design@sahilsarthak.com](mailto:design@sahilsarthak.com)

W. [www.sahilsarthak.com](http://www.sahilsarthak.com)

KALPATARU : THE WISHING TREE



# Lotus Flower Frame Painting – Lotus – Tall Height

MRP – Rs 1,85,000/- (taxes extra)

Painting – 41.5" x 24", Total Height – 57"



FRONT



BACK



# Lotus Flower Frame Painting – Jackfruit & Mango – Small Height

MRP – Rs 1,95,000/- (taxes extra)  
Painting - 50" x 24", Total Height – 40 "



FRONT



BACK



SARTHAK SAHIL DESIGN CO

E. [design@sahilsarthak.com](mailto:design@sahilsarthak.com)

W. [www.sahilsarthak.com](http://www.sahilsarthak.com)

KALPATARU : THE WISHING TREE

# Lotus Flower Frame Painting – Jackfruit & Mango – Tall Height

MRP – Rs 1,95,000/- (taxes extra)  
Painting - 50" x 24", Total Height – 58"



FRONT



BACK



SARTHAK SAHIL DESIGN CO

E. [design@sahilsarthak.com](mailto:design@sahilsarthak.com)

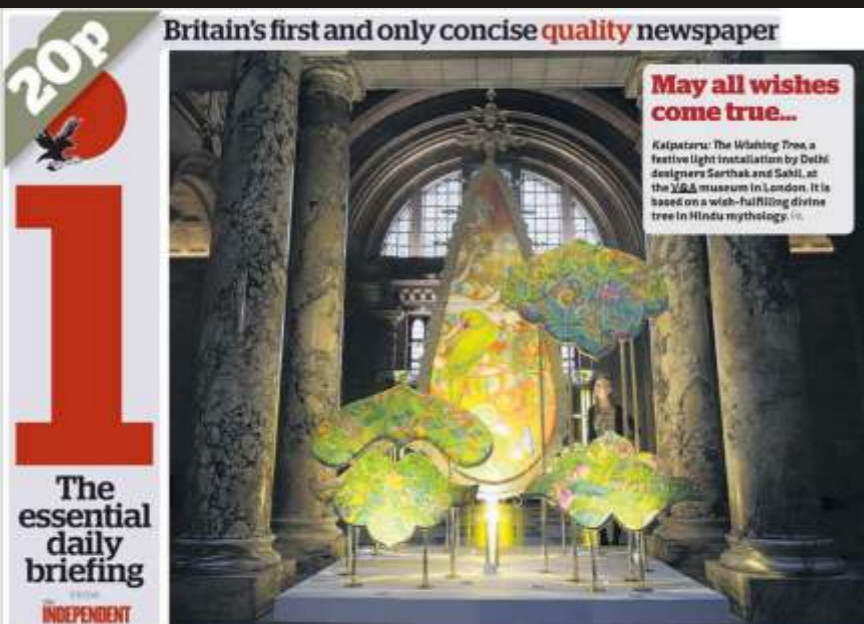
W. [www.sahilsarthak.com](http://www.sahilsarthak.com)

KALPATARU : THE WISHING TREE

# NEWS & PRESS ABOUT THE KALPATARU



THE TIMES, UNITED KINGDOM  
11th November 2015



THE INDEPENDENT, UNITED KINGDOM  
11 November 2015



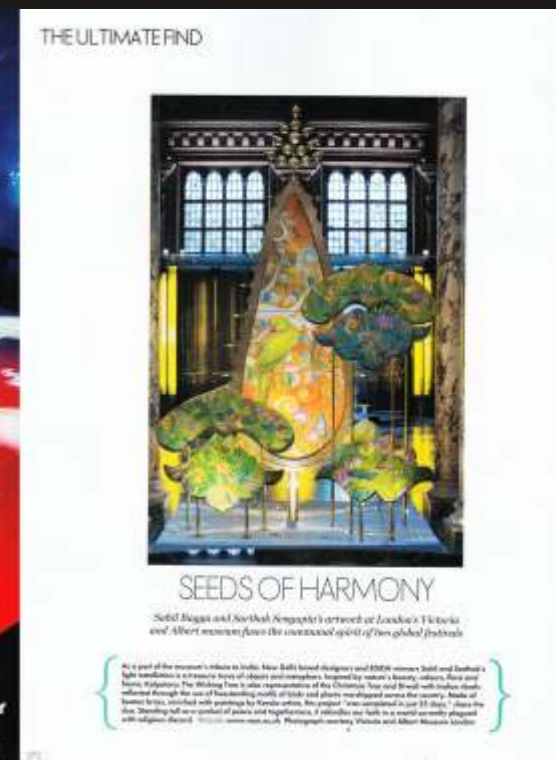
THE DAILY TELEGRAPH, UNITED KINGDOM  
11th November 2015



ELLE DECOR INDIA  
December 2015



The Economic Times  
23 December 2015



Financial Chronicle  
25 December 2015



SARTHAK SAHIL DESIGN CO

E. design@sahilsarthak.com

W. www.sahilsarthak.com

KALPATARU : THE WISHING TREE

# THANK YOU

EMAIL: [design@sahilsarthak.com](mailto:design@sahilsarthak.com)

Website: [www.sahilsarthak.com](http://www.sahilsarthak.com)

